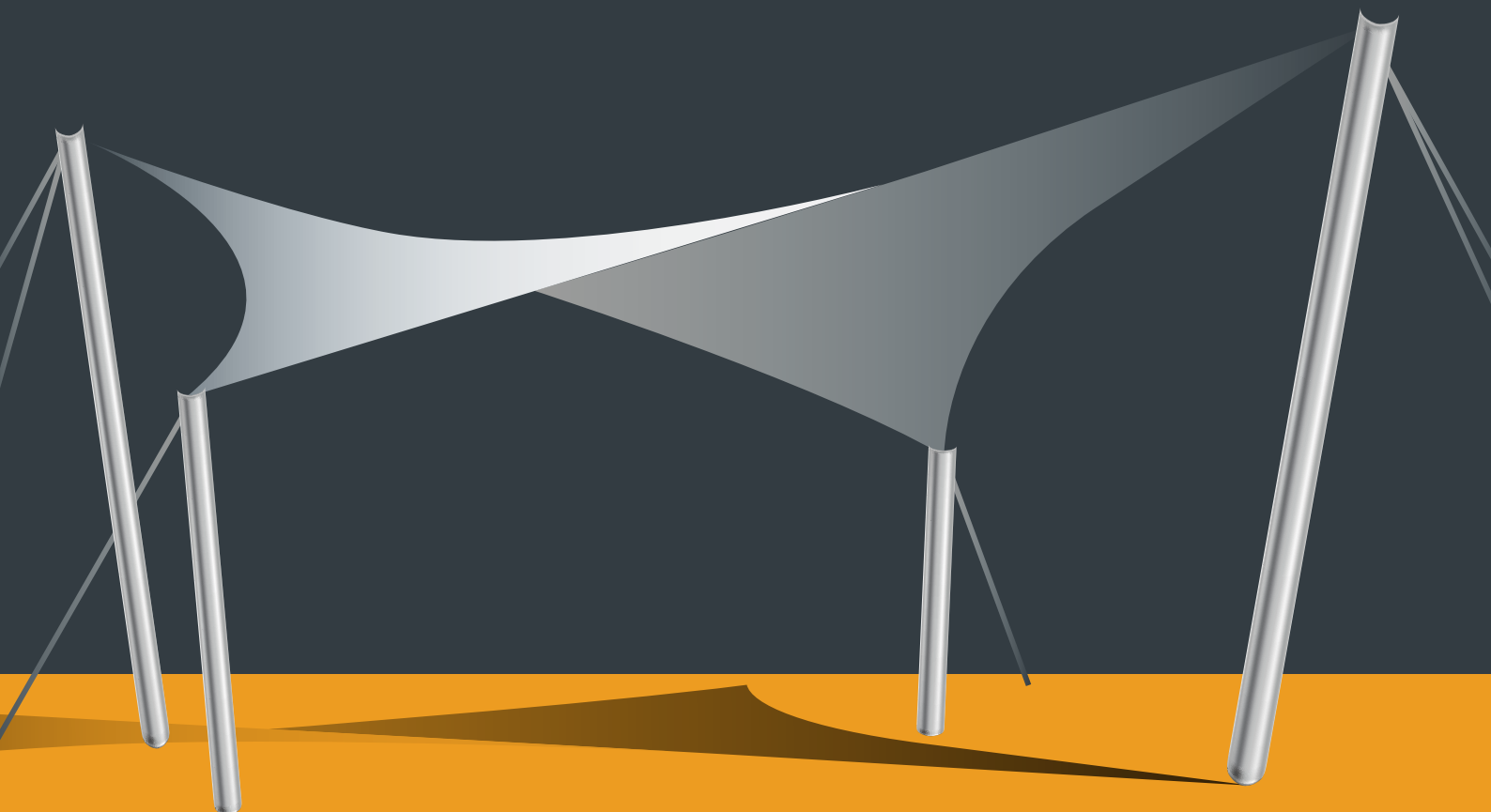


# tensile fabric architecture





## TENSILE FABRIC ARCHITECTURE

**Tensile fabric structures** are characterized by the tensioning of a membrane system in order to achieve the desired architectural result. They are very flexible, light-weight and can be tailored to the exact requirements of a project. Being an expert in the tensile membranes field since many years, our company can provide complete solutions which include:

- ◆ Consulting
- ◆ Proposals and 3D designs
- ◆ Structural engineering
- ◆ Detailed design and manufacture of the membranes & the structural supports
- ◆ Project management
- ◆ Installation

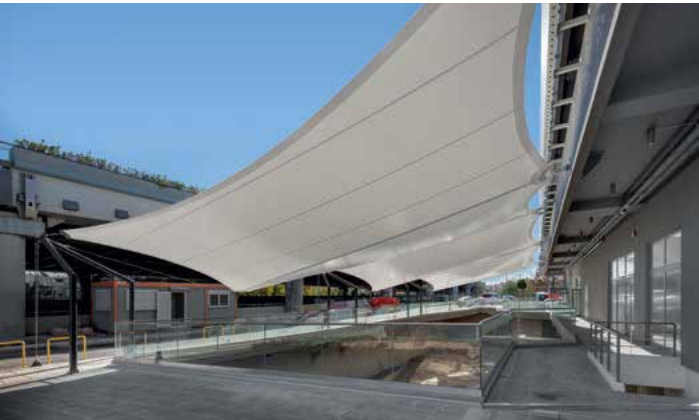
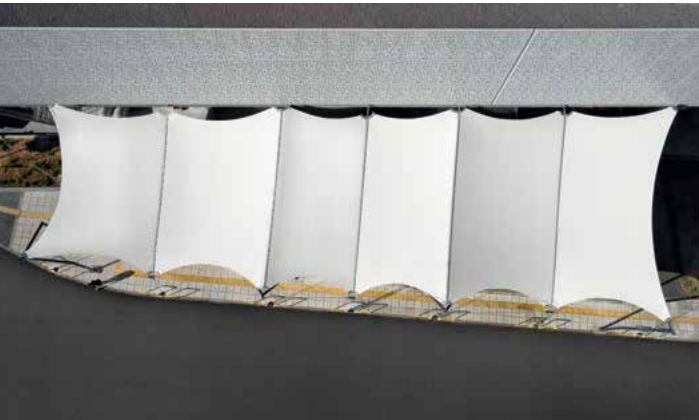


# TEN-BRINKE RETAIL PARK

**PROJECT INFO**  
**Project:** Protection of archeological area  
**Area covered:** 490m<sup>2</sup>  
**Location:** Ten Brinke Retail Park, Piraeus  
**Membrane Type:** Mehler Valmex FRI000 Type III



## CONCEPT & DETAILS



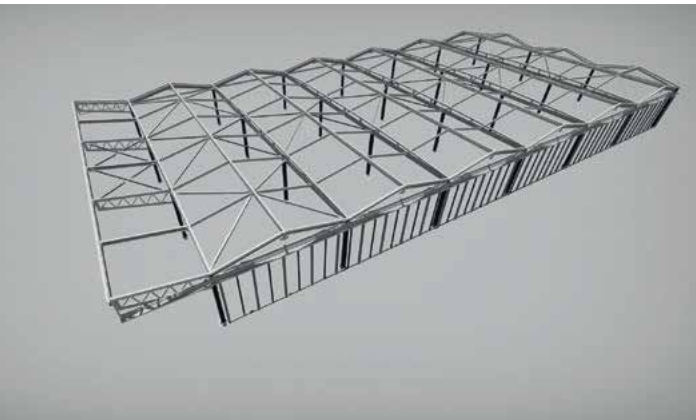
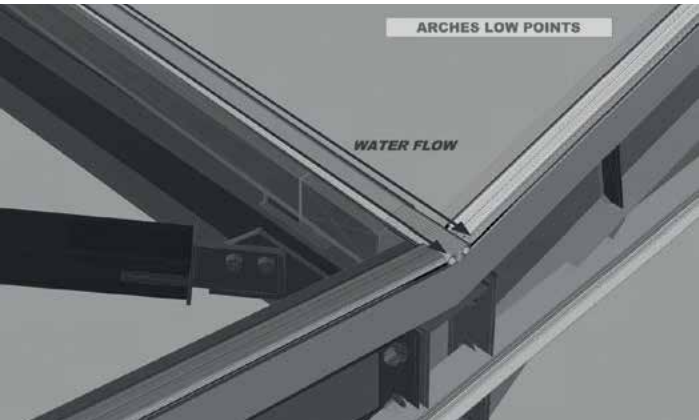


# THE HILLS COURSE, COSTA NAVARINO

**PROJECT INFO** | **Project:** Steel structure with tensile roof which would be used as a parking and charging point for golf cars  
**Area covered:** 780m<sup>2</sup>  
**Location:** Costa Navarino, 'The Hills' Golf Club, Pilos, Messina  
**Membrane Type:** Mehler Valmex FRI000 Type III



## CONCEPT & DETAILS



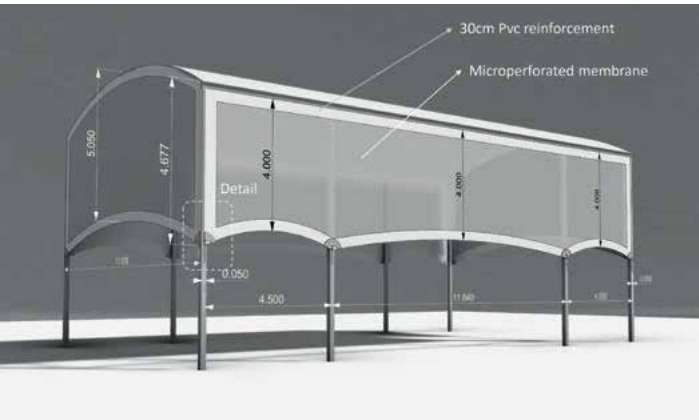
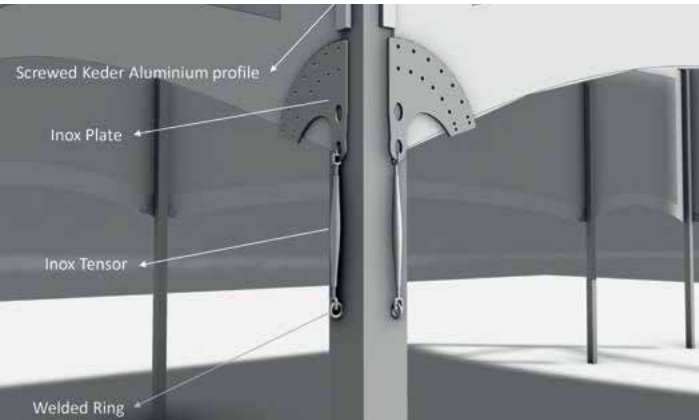


# PADEL COURTS, ATHENS

**PROJECT INFO** | **Project:** Side closings of four padel courts, for protection against sun and rain.  
**Area covered:** 1000m<sup>2</sup>  
**Location:** 'Vibora' Padel courts, Athens  
**Membrane Type:** Soltis 92 mesh membrane, by Serge Ferrari



## CONCEPT & DETAILS



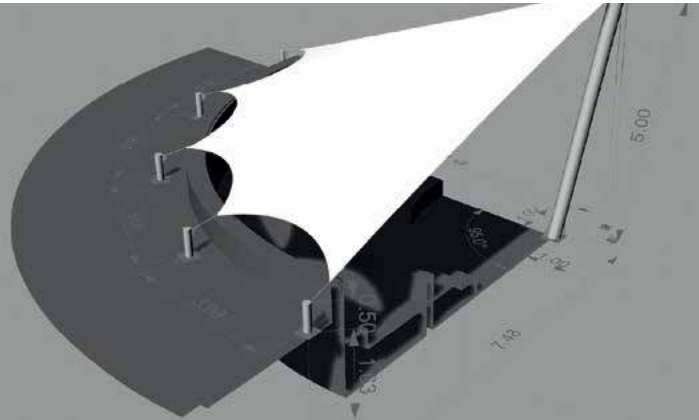


# GRECOTEL, DAPHNILA BAY

**PROJECT INFO**  
**Project:** Steel poles with tensile roof for sun-protection of the pool-bar.  
**Area covered:** 75m<sup>2</sup>  
**Location:** Grecotel Lux Me, Daphnila Bay, Dassia, Corfu  
**Membrane Type:** Mehler Valmex FR900 Type II



## CONCEPT & DETAILS



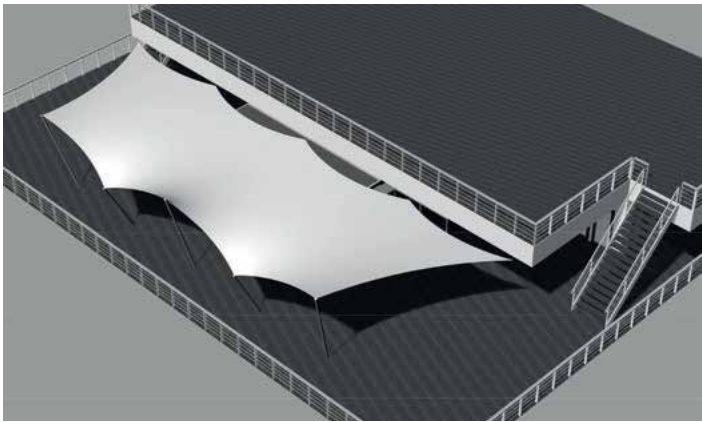
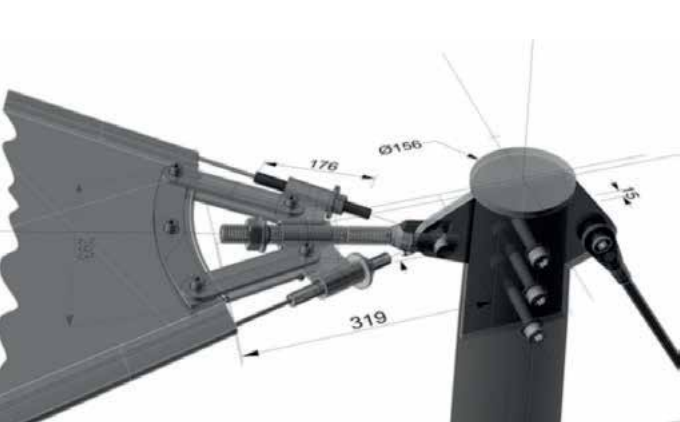


# MAIN SHIFF HERZ, TUI

**PROJECT INFO**  
**Project:** tensile membrane in one single piece, to offer sun-protection on the upper deck.  
**Area covered:** 350m²  
**Location:** Cruise ship 'Mein Schiff Herz', operated by TUI  
**Membrane Type:** Mehler Valmex FRI000 Type III



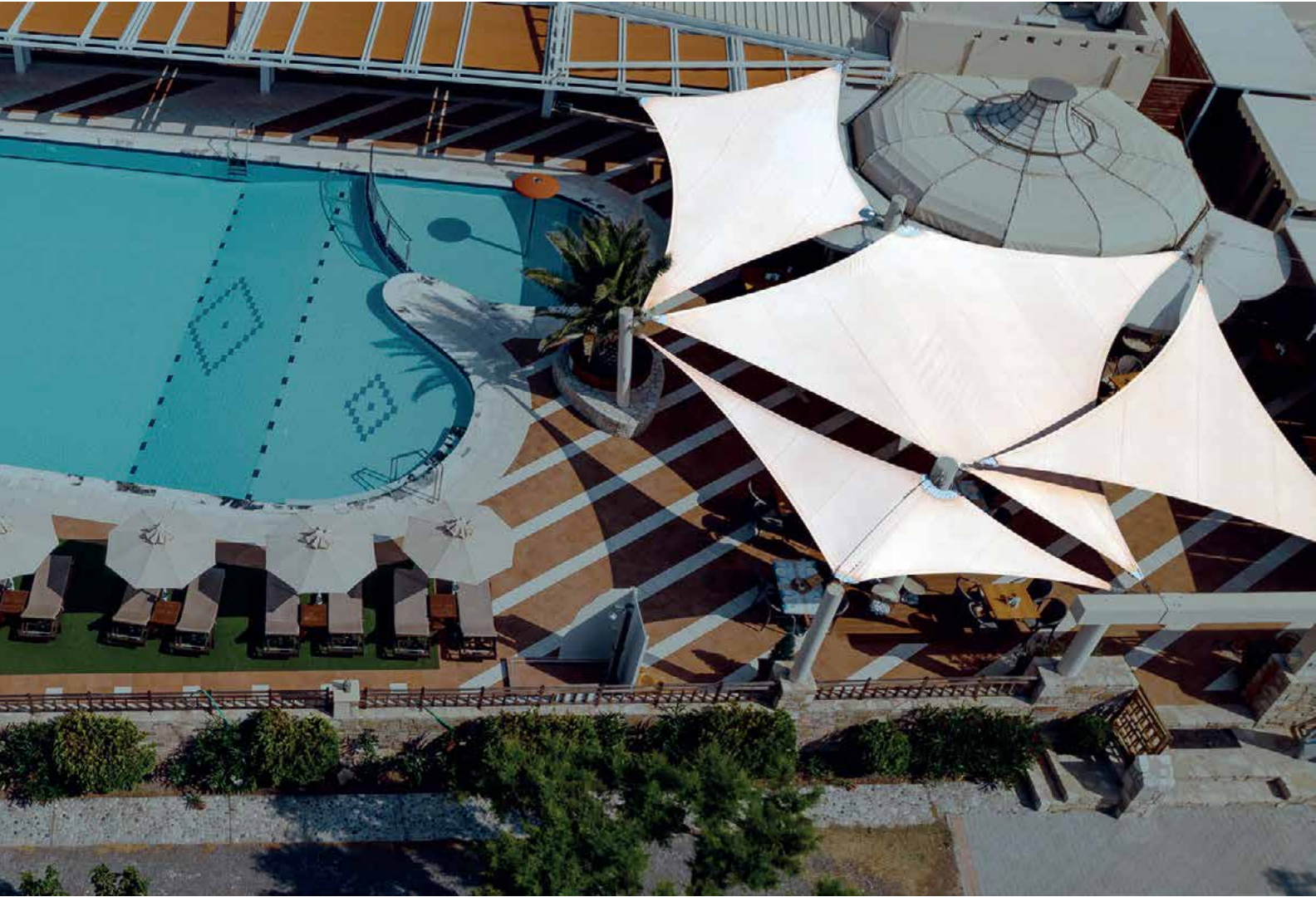
## CONCEPT & DETAILS



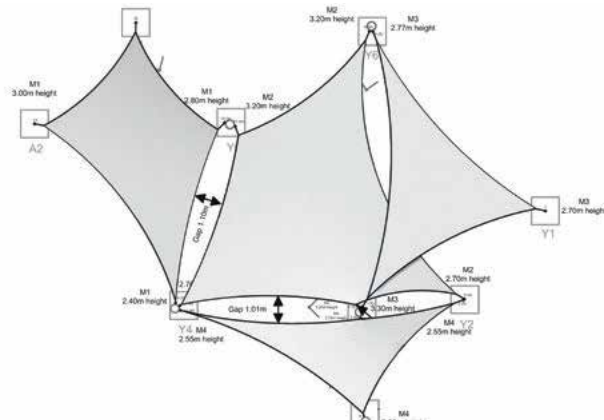


# KORALLI RESTAURANT & POOL BAR

**PROJECT INFO**  
**Project:** Tensile membranes, following the architectural concept, to offer sun-protection on the pool-bar.  
**Area covered:** 320m<sup>2</sup>  
**Location:** Koralli Restaurant & Pool Bar, Ierapetra, Crete  
**Membrane Type:** Soltis 92 Mesh Membrane, by Serge Ferrari



## CONCEPT & DETAILS



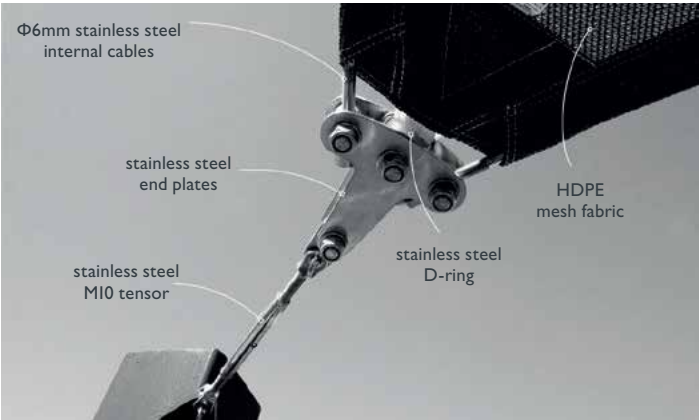


# PRIVATE HOUSE, AMORGOS

**PROJECT INFO** | **Project:** Tensile membranes, to offer sun-protection at the verandas of the house by respecting the island aesthetic.  
**Area covered:** 260m<sup>2</sup>  
**Location:** Amorgos Island, Cyclades  
**Membrane Type:** HDPE mesh, Commercial 95



## CONCEPT & DETAILS

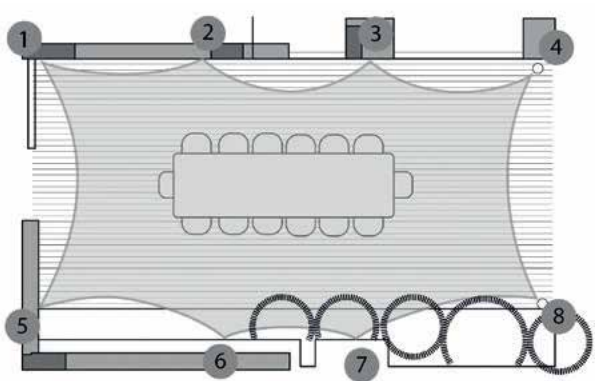


# PRIVATE HOUSE, TINOS

**PROJECT INFO** | **Project:** 8-corner tensile membrane for the sun-protection of a wooden-deck veranda  
**Area covered:** 35m<sup>2</sup>  
**Location:** Kardiani, Tinos Island, Cyclades  
**Membrane Type:** HDPE mesh, Commercial 95



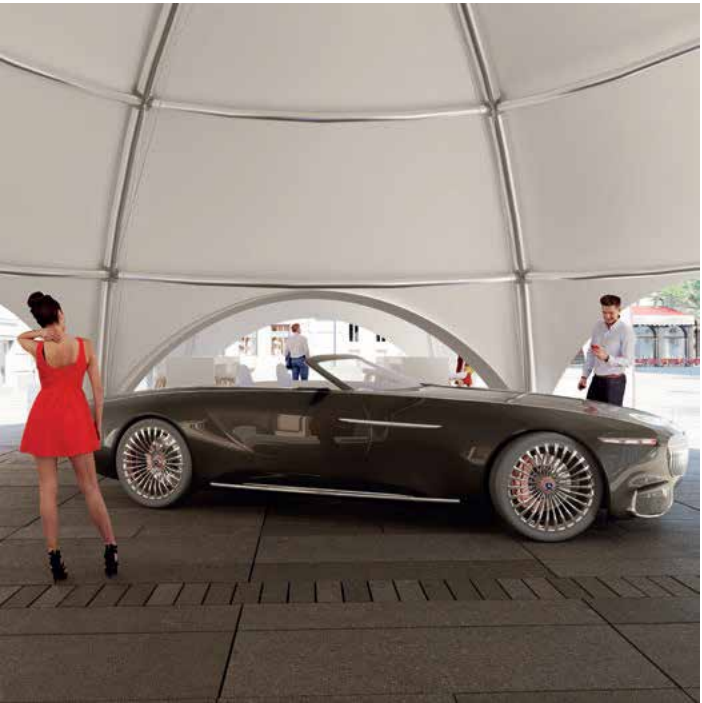
## CONCEPT & DETAILS





# UPCOMING TENSILE PROJECT

**PROJECT INFO** Have a look at our upcoming tensile project, designed and engineered by our company. 'Igloo' shaped structures, combining high-quality aluminum frame and tensile pvc membrane. Three different sizes (75m² – 100m² – 175m²). Endless combination possibilities among them. Permanent or 'pop-up' use. Very soon to be launched, so stay tuned!





INSPIRATIONAL PROJECTS



6-corner architectural membrane for covering an area of 324m².



5 hypar membranes, made of 'mesh' fabric Valmex TF, which combines sun-protection and perfect view towards the sky



8 corner architectural membrane, with up/down design, to cover a playground of 300m².



437m² tensile structure, one side mounting, to protect the spectators-area against the sun



540m² tunnel structure, with combination of metallic arches and tensile membrane, for playground covering.



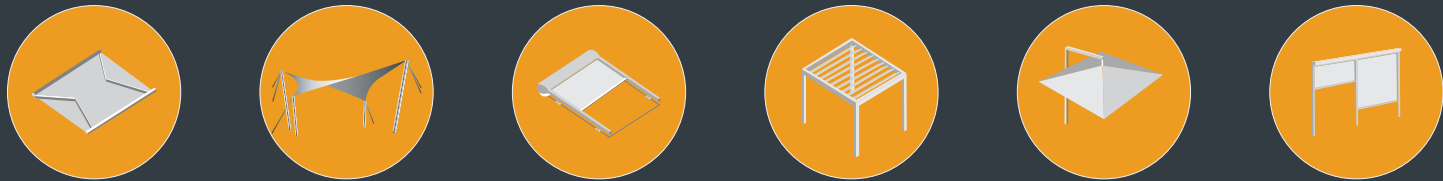
Metallic structure with tensile membrane roof, for covering a complex of padel courts of 1175m².





OUR PROJECTS

TAILOR-MADE SHADING SYSTEMS



FOR ARCHITECTURAL APPLICATIONS



**David Kamchis, Director**  
Msc Archineer / Tensile Membrane Structures  
Beng Mechanical Engineer

Scan here to explore the full range of our products and projects.



[www.kamxis.gr](http://www.kamxis.gr)





## FIND US ON THE WEB



[www.kamxis.gr](http://www.kamxis.gr)



Kamchis Shading Systems



[kamchis\\_shading\\_systems](https://www.instagram.com/kamchis_shading_systems)



Kamchis Shading Systems



[Kamchis Architectural Shading Systems](https://www.linkedin.com/company/kamchis-architectural-shading-systems)

## CONTACT US



David Kamchis & Co.  
22 Lefkados Str., Moschato, 18346, Athens



+30 210 345 5761 | +30 210 347 1531



[info@kamxis.gr](mailto:info@kamxis.gr)

